

RETAIL FOR LEASE - SHOPPES AT PLAINVIEW

**801-865 SOUTH HURSTBOURNE PKWY.,
LOUISVILLE, KY 40222**



Property Information

- Up to ±17,000 Square Feet Junior Anchor Available.
- ±1,400-8,000 Small Shop Space Available.
- Anchored by Barnes & Noble Booksellers and Brick House Tavern.
- Excellent Visibility.
- Trade Area Includes Lowes, Kroger, office parks, hotels, and restaurants.

Traffic Count on Hurstbourne Parkway: 39,000 AADT

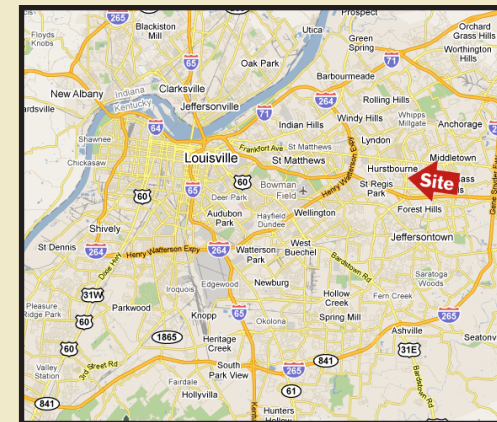
Demographic Snapshot (2010)

	1mi	3mi	5mi
Population	9,382	75,977	193,175
Ave. HHI	\$92,373	\$79,001	\$79,139



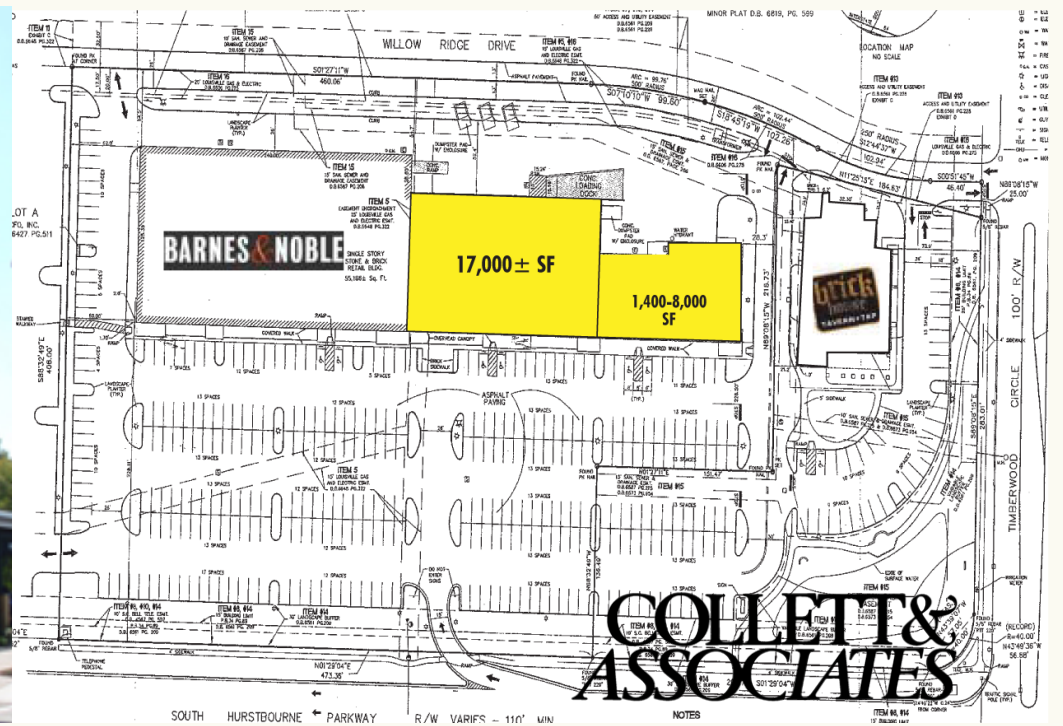
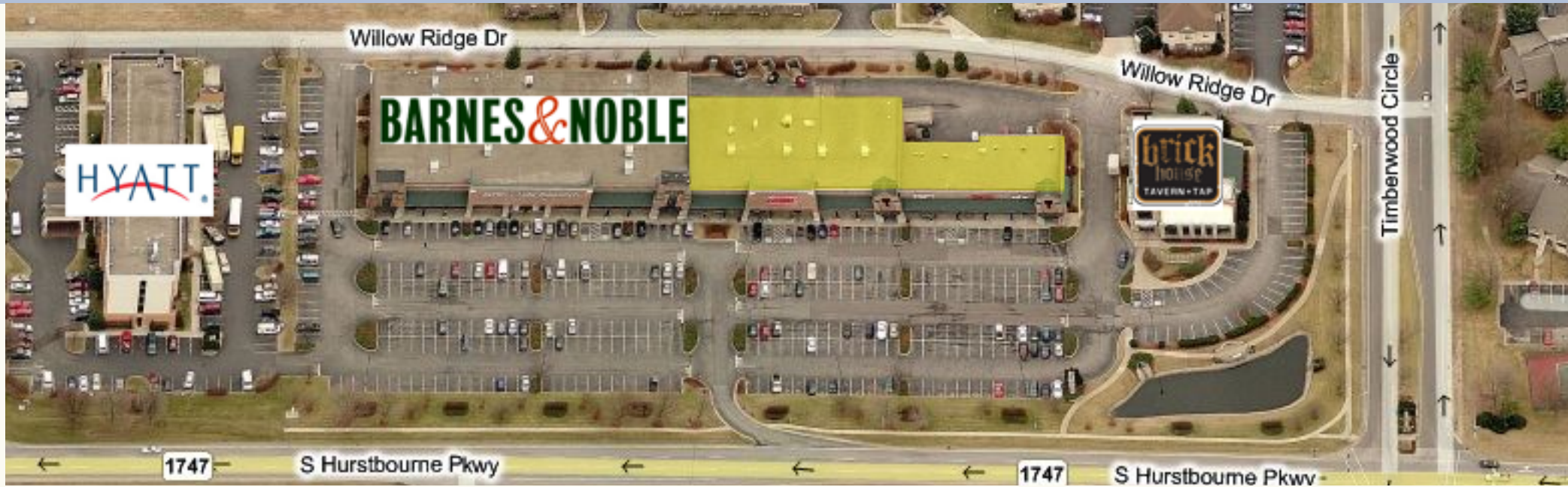
**COLLETT &
ASSOCIATES**

1111 Metropolitan Avenue, Suite 700 Charlotte, NC 28204 704-206-8300 ph 704-335-8654 fx
Mailing Address: P.O. Box 36799 Charlotte 28236-6799



CONTACT:
Charles Thrift
704-206-8346 direct
cthrift@collett.biz
www.collett.biz

SHOPPES AT PLAINVIEW



AERIAL - SHOPPES AT PLAINVIEW



©2011 Collett Management, LLC. Information provided regarding this property/space/asset has been obtained or compiled from sources believed to be reliable resources. While we have no reason to doubt the accuracy of such information, we have not independently verified or audited all information and make no guarantee, warranty or representation about such information and the same is expressly disclaimed. The information provided is subject to the possibility of errors, omissions, change of terms or other conditions, prior sale, lease or financing, or withdrawal without notice. The information provided may change or be updated and persons accessing such information should update their review of the information provided as appropriate. Any projections, opinions, assumptions or estimates provided are by way of example only, and may not represent current or future expected results with respect to the property/space/asset. One should conduct their own independent investigation of any property or transaction in consultation with their own tax, legal and other appropriate professional advisors.

**COLLETT &
ASSOCIATES**

CENSUS DEMOGRAPHIC PROFILE

2010 Census (PL-94)

Calculated using Proportional Block Groups



Lat/Lon: 38.2347/-85.5768

PL94a

865 S Hurstbourne Pkwy Louisville, KY 40222-5631	1 mi radius	3 mi radius	5 mi radius
Population			
Total Population	9,382	75,977	193,175
Population 18 years or over	7,510 80.0%	60,358 79.4%	151,410 78.4%
Population under 18 years	1,873 20.0%	15,619 20.6%	41,765 21.6%
Population Density	2,987 <i>psm</i>	2,688 <i>psm</i>	2,460 <i>psm</i>
Occupancy			
Total Housing Units	4,509	36,137	89,194
Occupied Housing Units	4,254 94.3%	33,797 93.5%	83,984 94.2%
Vacant Housing Units	255 5.7%	2,340 6.5%	5,210 5.8%
Average Household Size	2.21	2.25	2.30
Population by Race			
Population of One Race	9,215 98.2%	74,478 98.0%	189,291 98.0%
White	7,633 82.8%	63,411 85.1%	161,300 85.2%
Black or African American	739 8.0%	6,750 9.1%	18,603 9.8%
American Indian or Alaska Native	18 0.2%	138 0.2%	315 0.2%
Asian	591 6.4%	2,524 3.4%	5,737 3.0%
Native Hawaiian or Pacific Islander	12 0.1%	47 0.1%	79 -
Some Other Race	223 2.4%	1,607 2.2%	3,257 1.7%
Two or More Races	167 1.8%	1,499 2.0%	3,884 2.0%
Hispanic Population			
Hispanic or Latino	462 4.9%	3,740 4.9%	8,207 4.2%
Population 18 years and over	321 69.5%	2,500 66.8%	5,423 66.1%
Population under 18 years	141 30.5%	1,240 33.2%	2,784 33.9%
Not Hispanic or Latino	8,920 95.1%	72,237 95.1%	184,968 95.8%
Population 18 years and over	7,188 80.6%	57,858 80.1%	145,987 78.9%
Population under 18 years	1,732 19.4%	14,379 19.9%	38,981 21.1%
Hispanic Population by Race			
Population of One Race	431 4.6%	3,497 4.6%	7,651 4.0%
White	204 47.3%	1,871 53.5%	4,325 56.5%
Black or African American	17 3.9%	102 2.9%	300 3.9%
American Indian or Alaska Native	3 0.6%	29 0.8%	57 0.7%
Asian	1 0.2%	11 0.3%	29 0.4%
Native Hawaiian or Pacific Islander	1 0.3%	9 0.3%	12 0.2%
Some Other Race	206 47.6%	1,474 42.2%	2,928 38.3%
Two or More Races	31 0.3%	242 0.3%	556 0.3%
Not Hispanic Population by Race			
Population of One Race	8,784 93.6%	70,980 93.4%	181,640 94.0%
White	7,428 84.6%	61,539 86.7%	156,974 86.4%
Black or African American	722 8.2%	6,648 9.4%	18,303 10.1%
American Indian or Alaska Native	15 0.2%	109 0.2%	259 0.1%
Asian	590 6.7%	2,513 3.5%	5,708 3.1%
Native Hawaiian or Pacific Islander	11 0.1%	38 0.1%	67 -
Some Other Race	17 0.2%	133 0.2%	329 0.2%
Two or More Races	136 1.5%	1,257 1.7%	3,328 1.7%

This report was produced using data from private and government sources deemed to be reliable. The information herein is provided without representation or warranty.

SUMMARY PROFILE

1990-2000 Census, 2010 Estimates with 2015 Projections

Calculated using Proportional Block Groups



Lat/Lon: 38.2347/-85.5768

RS1

865 S Hurstbourne Pkwy		1 mi radius	3 mi radius	5 mi radius
Louisville, KY 40222-5631				
POPULATION	2010 Estimated Population	8,290	73,095	186,922
	2015 Projected Population	8,613	74,532	191,800
	2000 Census Population	8,563	73,740	180,296
	1990 Census Population	8,529	66,253	158,945
	Projected Annual Growth 2010 to 2015	0.8%	0.4%	0.5%
	Historical Annual Growth 1990 to 2010	-0.1%	0.5%	0.9%
	2010 Median Age	43.8	39.7	39.8
HOUSEHOLDS	2010 Estimated Households	3,700	30,881	78,325
	2015 Projected Households	3,843	31,502	80,365
	2000 Census Households	3,829	31,418	76,636
	1990 Census Households	3,723	27,073	65,036
	Projected Annual Growth 2010 to 2015	0.8%	0.4%	0.5%
	Historical Annual Growth 1990 to 2010	-	0.7%	1.0%
RACE AND ETHNICITY	2010 Estimated White	81.4%	84.0%	84.3%
	2010 Estimated Black or African American	9.0%	9.7%	9.9%
	2010 Estimated Asian or Pacific Islander	5.9%	3.3%	3.0%
	2010 Estimated American Indian or Native Alaskan	0.1%	0.1%	0.1%
	2010 Estimated Other Races	1.8%	1.2%	0.9%
	2010 Estimated Hispanic	6.3%	4.8%	4.0%
INCOME	2010 Estimated Average Household Income	\$92,373	\$79,001	\$79,139
	2010 Estimated Median Household Income	\$76,333	\$65,383	\$65,765
	2010 Estimated Per Capita Income	\$41,327	\$34,401	\$33,890
EDUCATION (AGE 25+)	2010 Estimated Elementary (Grade Level 0 to 8)	0.8%	1.7%	1.6%
	2010 Estimated Some High School (Grade Level 9 to 11)	2.9%	3.6%	3.7%
	2010 Estimated High School Graduate	17.8%	22.0%	22.3%
	2010 Estimated Some College	22.6%	22.9%	22.8%
	2010 Estimated Associates Degree Only	6.5%	7.6%	7.6%
	2010 Estimated Bachelors Degree Only	29.8%	25.8%	25.4%
	2010 Estimated Graduate Degree	19.6%	16.4%	16.7%
BUSINESS	2010 Estimated Total Businesses	828	5,122	10,166
	2010 Estimated Total Employees	12,340	77,226	138,468
	2010 Estimated Employee Population per Business	14.9	15.1	13.6
	2010 Estimated Residential Population per Business	10.0	14.3	18.4

This report was produced using data from private and government sources deemed to be reliable. The information herein is provided without representation or warranty.