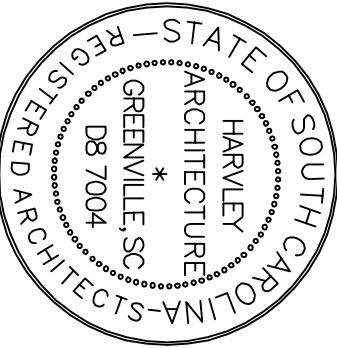


HARVEY ARCHITECTURE

ARCHITECTS • PLANNERS
11 NORTH IRVINE STREET
SUITE 10
GREENVILLE, SC 29601
(864) 288-7107
www.harveyarchitecture.com
jamesharvey@harveyarchitecture.com

THIS DRAWING MAY NOT BE
REPRODUCED OR COPIED
WITHOUT THE WRITTEN
EXPRESSION OF HARVEY ARCHITECTURE

SEAL



PROJECT TITLE

NEW FACILITIES FOR

SCUFFLETOWN
FOOD TRUCK PARK

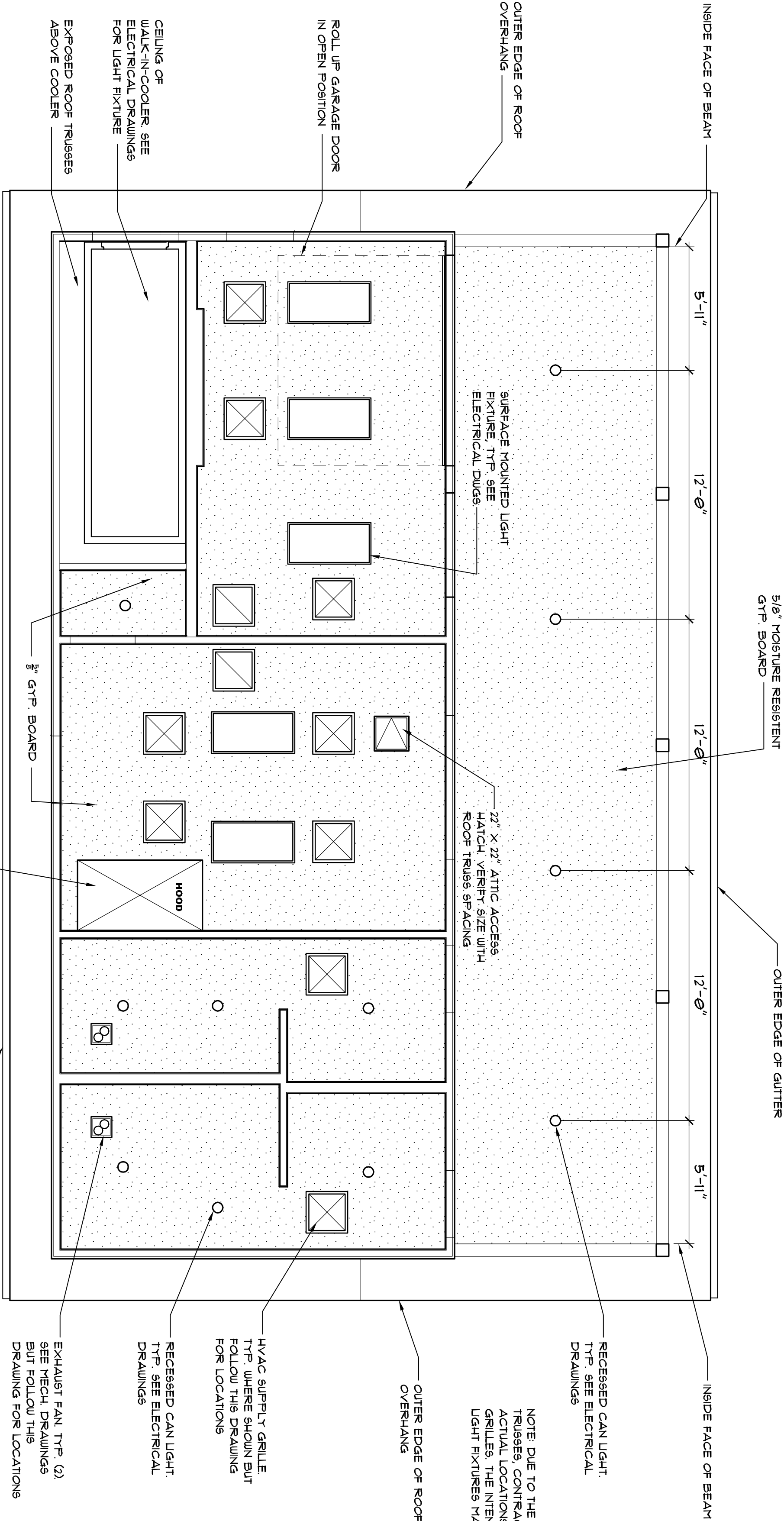
206 LADEAN COURT
SIMPSONVILLE, SC

DRAWN	JFH
APPROVED	JFH
DATE	12-29-22
PROJ. NO.	22114
DATE PRINTED	12-29-22
REVISION NO.	REVISION DESCRIPTION

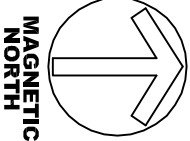
FLOOR PLAN
REFLECTED CEILING PLAN

DRAWING NO.

A-1



REFLECTED CEILING PLAN - RETAIL BUILDING

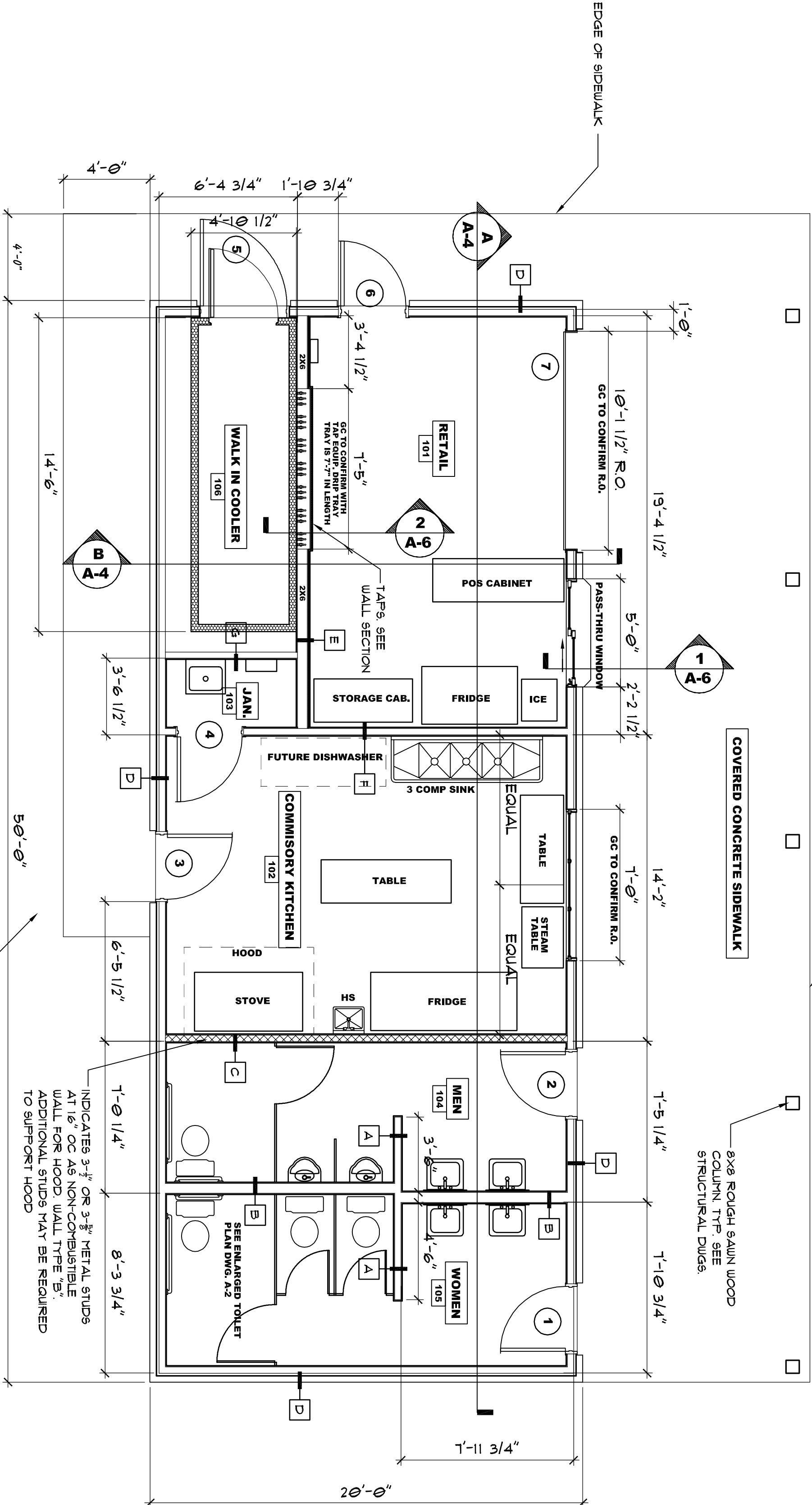


EDGE OF SIDEWALK



COVERED CONCRETE SIDEWALK

8x8 ROUGH SAUN WOOD
COLUMN TYP. SEE
STRUCTURAL DINGS.



FLOOR PLAN - RETAIL BUILDING



WALL TYPE LEGEND

- A** — 2x4 WOOD STUDS @ 16" O.C. W/ 3/8" GYPSUM BOARD ON BOTH SIDES UP TO CEILING. FILL W/ 3" SOUND BATTs.
- B** — 2x6 WOOD STUDS @ 16" O.C. W/ 3/8" MOISTURE RESISTANT GYPSUM BOARD ON BOTH SIDES UP TO CEILING. FILL W/ 3" SOUND BATTs. FRP BOARD FROM FLOOR TO 4'-0" AFF.
- C** — 3" OR 3-5/8" HTL. STUDS, 2@ G.A., @ 16" O.C. W/ 5/8" GYPSUM BOARD. FRP BOARD FROM FLOOR TO 4'-0" AFF. THIS IS NON-COMBUSTIBLE WALL SUPPORTING EXHAUST HOOD.
- D** — 2x4 WOOD STUDS @ 16" O.C. WITH 3/8" GYP. BOARD ON INTERIOR, 1/2" SHEATHING BOARD ON EXTERIOR, 1" AIR SPACE, TYPER MOISTURE BARRIER AND 4" FACE BRICK. R-13 BATT INSULATION ABOVE BRICK. ROLLOCK COURSE, BOARD AND BATTEN FINISH. AT KITCHEN AND TOILETROOMS, ADD FRP BOARD FROM FLOOR TO 4'-0" AFF.
- E** — 2x4 WOOD STUDS @ 16" O.C. W/ 3" DENSGLASS BOARD ON RETAIL SIDE FOR THINSET BRICK. 3/8" GYP. BOARD ON COOLER SIDE. SEE WALL SECTION DETAIL 2/4-6.
- F** — 2x4 WOOD STUDS @ 16" O.C. W/ 3/8" GYPSUM BOARD ON BOTH SIDES UP TO CEILING. FILL W/ 3" SOUND BATTs. FRP BOARD FROM FLOOR TO 4'-0" AFF ON KITCHEN SIDE.
- G** — 2x4 WOOD STUDS @ 16" O.C. W/ 3/8" GYPSUM BOARD. USE MOISTURE RESISTANT GYPSUM BOARD ON PUMING WALL. FRP BOARD FROM FLOOR TO 4'-0" AFF ON ALL WALLS.